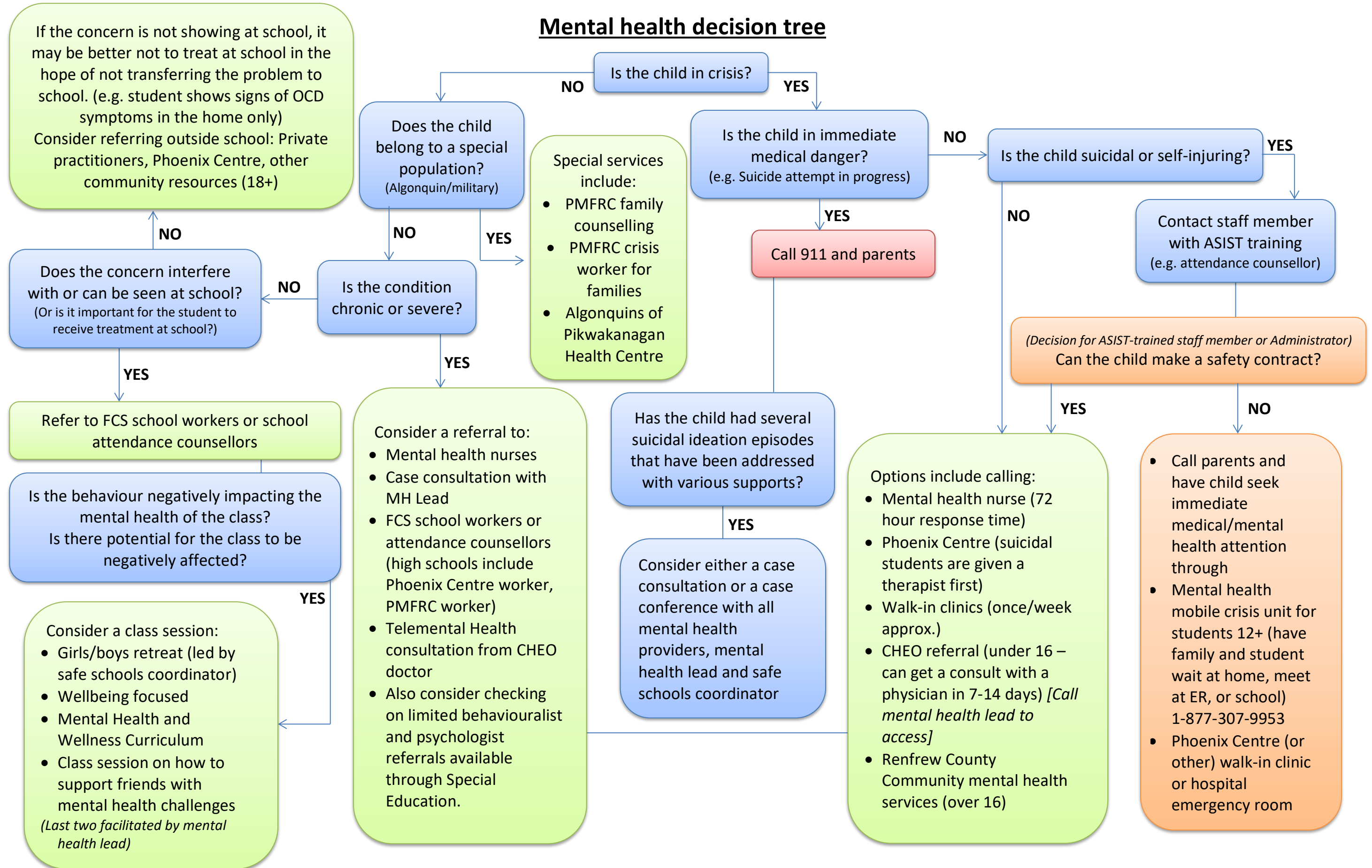


## Mental health decision tree



Call ASIST Certified Staff Members if concerned about suicidal ideation.

\*denotes staff members certified with ASIST and Suicide to Hope (advanced level)

## ASIST (Applied Suicide Intervention Skills Training) Certified Staff Members

Supports	Phone Number	Email
Tammy Peplinski *(School Counsellor)	613-281-2814	tpeplinski@rccdsb.edu.on.ca
Lisa Dellezay *(School Counsellor)	613 585-0266	ldellezay@rccdsb.edu.on.ca
Cindy Giroux (School Counsellor)	613-687-5918	cgiroux@rccdsb.edu.on.ca
Sarah Cybulski (School Counsellor)	613-432-4351	sarah.cybulski@rccdsb.edu.on.ca
Erik Lemke (Bishop Smith HS)	613-735-5496	elemke@rccdsb.edu.on.ca
Peter Gleason *(Bishop Smith HS)	613-735-5496	pgleason@rccdsb.edu.on.ca
Angela Watson (Bishop Smith HS)	613-735-5496	angelawatson@rccdsb.edu.on.ca
Heather Hickson (Bishop Smith HS)	613-735-5496	hhickson@rccdsb.edu.on.ca
Pam Dickerson (St. Joseph's HS)	613-432-5846	pdickerson@rccdsb.edu.on.ca
Jason Dedo (St. Joseph's HS)	613-432-5846	jdedo@rccdsb.edu.on.ca
Mark Valliquette (St. Joseph's HS)	613-432-5846	mvalliquette@rccdsb.edu.on.ca
Jessica Pender (St. Joseph's HS)	613-432-5846	jpender@rccdsb.edu.on.ca
Holly Afelskie (St. Joseph's HS)	613-432-5846	hafelskie@rccdsb.edu.on.ca
Christina Brown-McGrath (St. John XXIII)	613-623-2828	cbrown@rccdsb.edu.on.ca
Heidi Fraser (St. Joseph's Calabogie)	613-752-2808	hfraser@rccdsb.edu.on.ca
Dave Noble (St. Anthony's)	613-589-2775	dnoble@rccdsb.edu.on.ca
John Artymko (St. Francis)	613-756-3708	jartymko@rccdsb.edu.on.ca
Jenn Reinwald (St. Mary's)	613-584-3567	jreinwald@rccdsb.edu.on.ca
Lisa Hart (St. James)	613-628-2927	lhart@rccdsb.edu.on.ca
Julie Huckabone (St. Joseph's)	613-623-2347	jhuckabone@rccdsb.edu.on.ca
Sherry Throop (Our Lady of Lourdes)	613-732-4633	sthroop@rccdsb.edu.on.ca
Tony Jacyno (Our Lady of Sorrows)	613-687-5918	tjacyno@rccdsb.edu.on.ca
Vikki Anderson (Holy Name)	613-687-4167	vanderson@rccdsb.edu.on.ca
Karen Keels (Our Lady of Fatima)	613-432-4351	kkeels@rccdsb.edu.on.ca
Tara Beselaere (Our Lady of Fatima)	613-432-4351	tbeselaere@rccdsb.edu.on.ca
Stephanie Lennox (St. Thomas)	613-432-3137	slennox@rccdsb.edu.on.ca
Julie Farnworth (Mental Health Nurse)	72 hr wait time after referral submitted if not in your building	Julie.Farnworth@lhins.on.ca
Leanne Orrell (Mental Health Nurse)	72 hr wait time after referral submitted if not in your building	Leanne.Orrell@lhins.on.ca
Rebecca Paulsen *(M H Lead)	613-281-2810	rpaulsen@rccdsb.edu.on.ca
Sandy Brannan *(S S Coordinator)	613-281-1894	sbrannan@rccdsb.edu.on.ca
Kevin deRuitter (Board Social Worker Cathedral)	613-732-8054	kderuitter@rccdsb.edu.on.ca
Sarah Bell (Board Social Worker – St. Joseph)	613-432-5846	SBell@rccdsb.edu.on.ca

## Private Practitioners in Renfrew County

Name	Location	Contact
Deborah Boldt	Arnprior and Pembroke	(613) 552-2068 <a href="http://www.DeborahBoldt.ca">www.DeborahBoldt.ca</a>
Daniel Parker	Eganville and Pembroke	613-602-7792 <a href="http://www.dparkerpsychotherapy.ca">www.dparkerpsychotherapy.ca</a>
Darlene Denis-Friske	Arnprior	(613) 735-1089 <a href="http://www.acycc.com">www.acycc.com</a>
Julie Edwards	Pembroke	(613) 732-9215 <a href="http://www.julieedwards.ca">www.julieedwards.ca</a>
Daniel F. Lanoue	Arnprior, Pembroke and Petawawa	(613) 623-5587 1-800-958-5835 <a href="mailto:Concordia@webruler.com">Concordia@webruler.com</a>
Michelle Antwi	Valley-wide	1-877-611-2337
Ursula Chavez	Renfrew and Pembroke	613-433-6976
Lina Faris	Pembroke	613-602-3366
Alisha Henson	Pembroke	343-369-0603
Marie Josée Hull	Pembroke and Braeside	613-282-8093
Jennifer Opoku	Pembroke	1-877-377-6152
Ali-John Chaudhary	Pembroke and Shawville	819-208-1234
Dr. Henry Venema	Pembroke	(613)432-5212
Bonnie Zentner	Pembroke	(613)732-9925 ext. 2223 <a href="mailto:bonnie@margueritecenter.com">bonnie@margueritecenter.com</a>
Dan Lanoue	Pembroke (Robbie Dean Centre)	(613) 635- 4715
Carolyn Lutcher		
Elna Roberts		

## Mental Health Walk-in Clinics

**Phoenix & ATS**  
(613-735-2374)

Pembroke

Tue 2-7 pm

Renfrew

Thur 2-7 pm

Arnprior

Wed 2-7 pm

Petawawa

Wed 2-6 pm

**Robbie Dean Centre**  
(613-433-4231)

Pembroke

Wed 3-7 pm

Renfrew

Thur 3-7 pm

Petawawa

Tue 1-5 pm

Arnprior

Mon 3-7 pm

Eganville

Mon 1-5 pm

<b>Algonquins of Pikwakanagan Health Centre</b>	613-625-2259
<b>CHEO referral – for suicidal, homicidal or psychotic students</b>	Contact MH Lead
<b>Mental Health and Addiction Nurses</b>	Referral form to CCAC
<b>Mental Health Lead</b>	Rebecca Paulsen
<b>Mental Health Crisis Unit</b>	Contacted by ASIST staff
<b>Mental Health Services of Renfrew County</b>	613-732-8770 ext. 8006
<b>Phoenix Centre</b>	613-735-2374
<b>PMFRC</b>	613-687-1641
<b>Safe Schools Coordinator</b>	Sandy Brennan
<b>School and Attendance Workers</b>	See ASIST trained staff list
<b>Wabano Center for Aboriginal Health</b>	613-748-0657